

SUTHERLAND SHIRE

SHIREABILITY ART AWARD

Celebrating creativity among all abilities

CALL FOR ENTRIES

The ShireABILITY Art Award provides an opportunity for artists of all ages who live with disability to share their creative talent and exhibit their work at Hazelhurst Arts Centre.

Open to artists with disability either living, working, going to school, or attending a community program in Sutherland Shire, to enter 2D or 3D original artworks.

Entries open 1 August 2024

Entries close 1 November 2024

Finalists exhibited at Hazelhurst Arts Centre
6 December to 17 December 2024

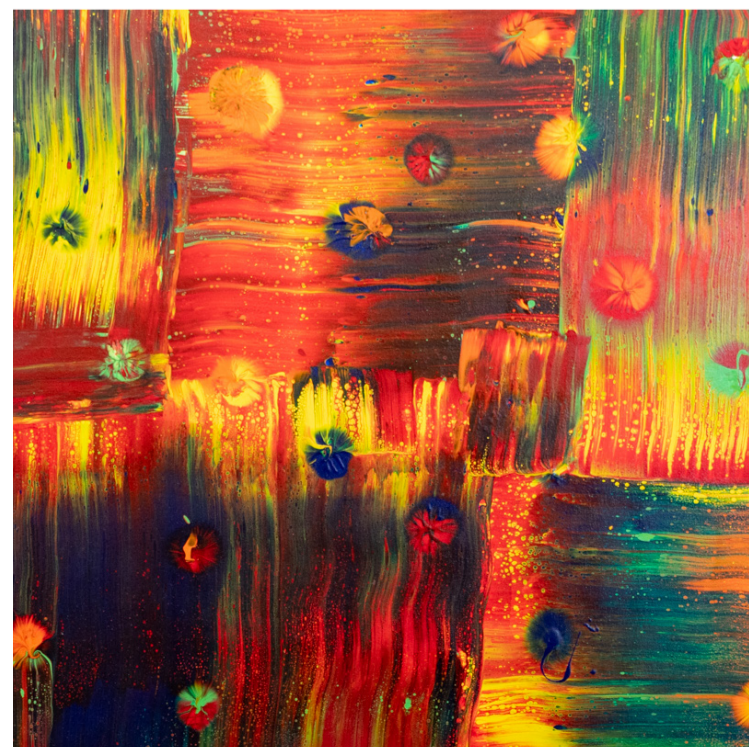
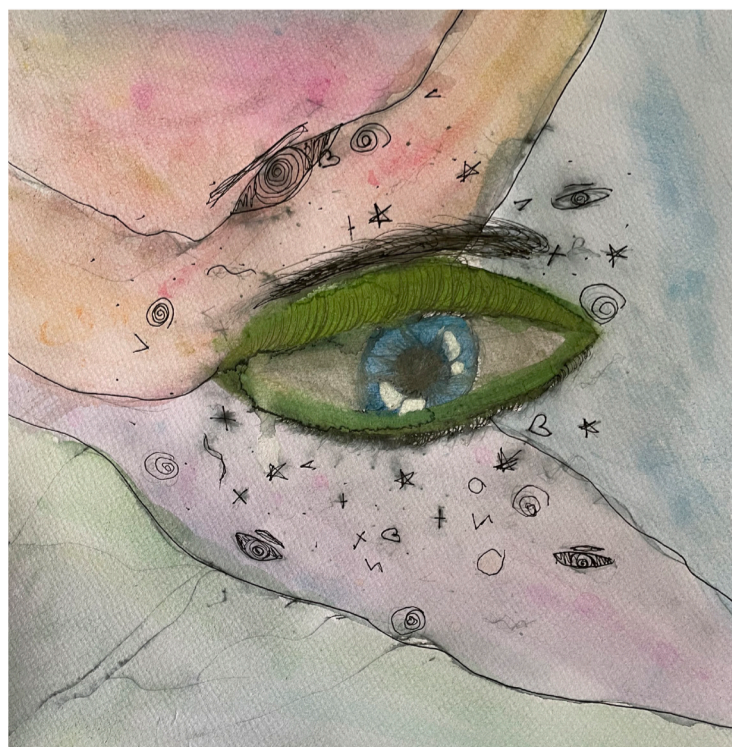
P 02 9710 0422

E shireability@ssc.nsw.gov.au

For more information visit sutherlandshire.nsw.gov.au/shireability



GET CREATIVE FOR YOUR CHANCE TO WIN A SHARE IN OVER \$2,500 WORTH OF PRIZES



Images L to R (details): Open Award Winner Kristy Lovegrove *North Cronulla Pool*; Young People's Award Winner Arabella Johnson *My Eye For The Future*; People's Choice Award Winner Julie Hayes *Shine Bright*.

Proudly supported by

